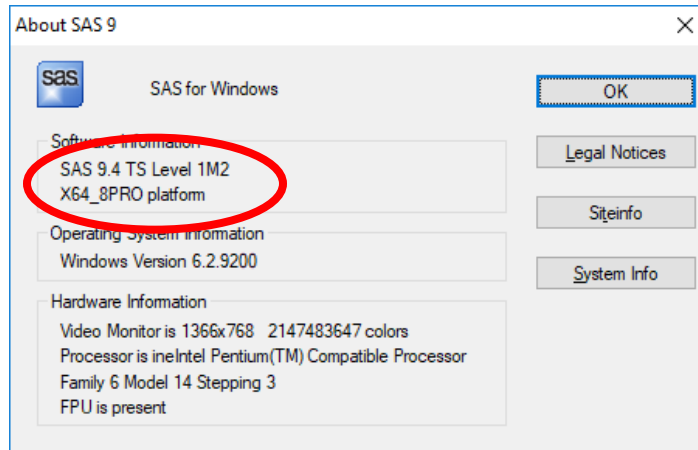


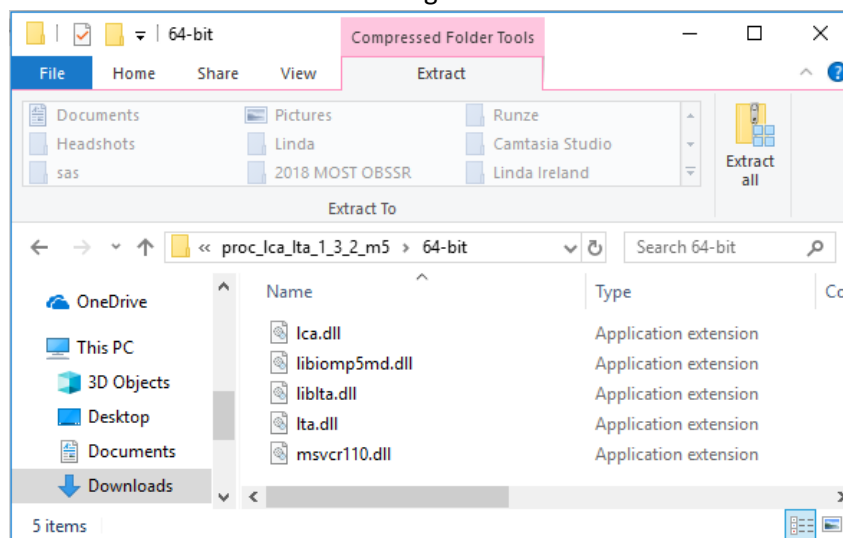
## PROC LCA for SAS 9.4 M5 and Higher: Download and Installation

1. Are you are using a 32-bit or 64-bit machine? Not sure? [See Microsoft's instructions.](#)
2. Open SAS version 9.4 (Note: SAS Enterprise Guide is NOT SAS).
  - a. Click on the **HELP -> ABOUT SAS 9** menu option.



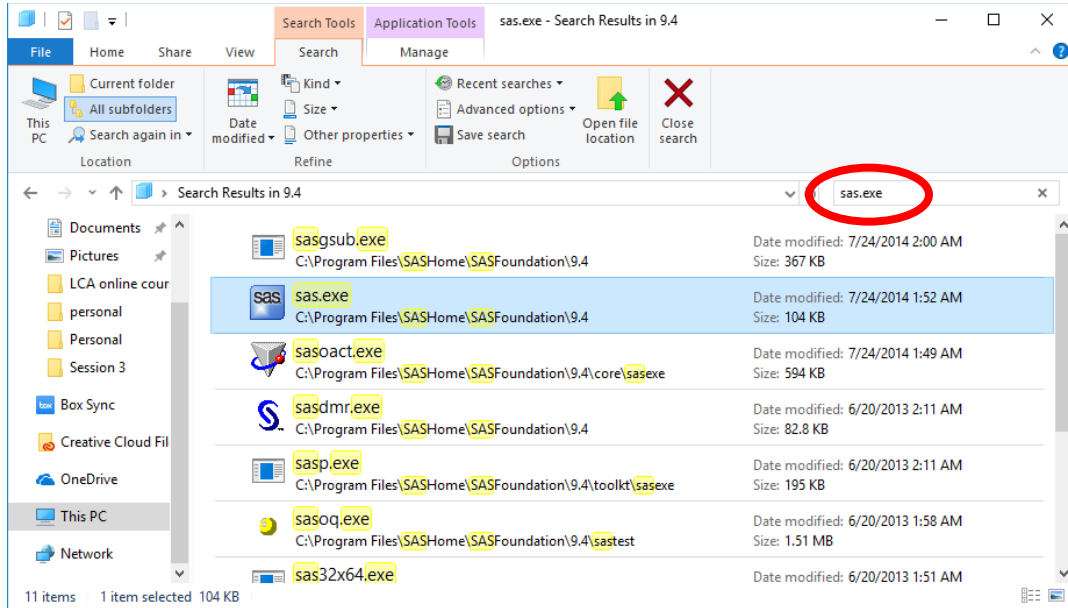
**Note: The version of SAS shown above is running the “M2” update. This version of SAS is not compatible with the M5 PROC LCA update.**

- b. If you have SAS 9.4 M3 or lower (including all versions of SAS 9.3, 9.2, or 9.1), download “PROC LCA & PROC LTA for SAS 9.4 M3 and earlier.” This document does not apply to you.
  - c. If you have SAS 9.4 M5 or higher, close SAS and continue.
3. Download the proper version of PROC LCA & PROC LTA.
    - a. Navigate to [methodology.psu.edu/downloads/proclcalta](http://methodology.psu.edu/downloads/proclcalta).
    - b. Select and download either the 32-bit or 64-bit version of “PROC LCA & PROC LTA for SAS 9.4 M5 or higher” and “PROC LCA & PROC LTA Users’ Guide.”
  4. Open the downloaded folder containing the five PROC LCA & PROC LTA .dll files.

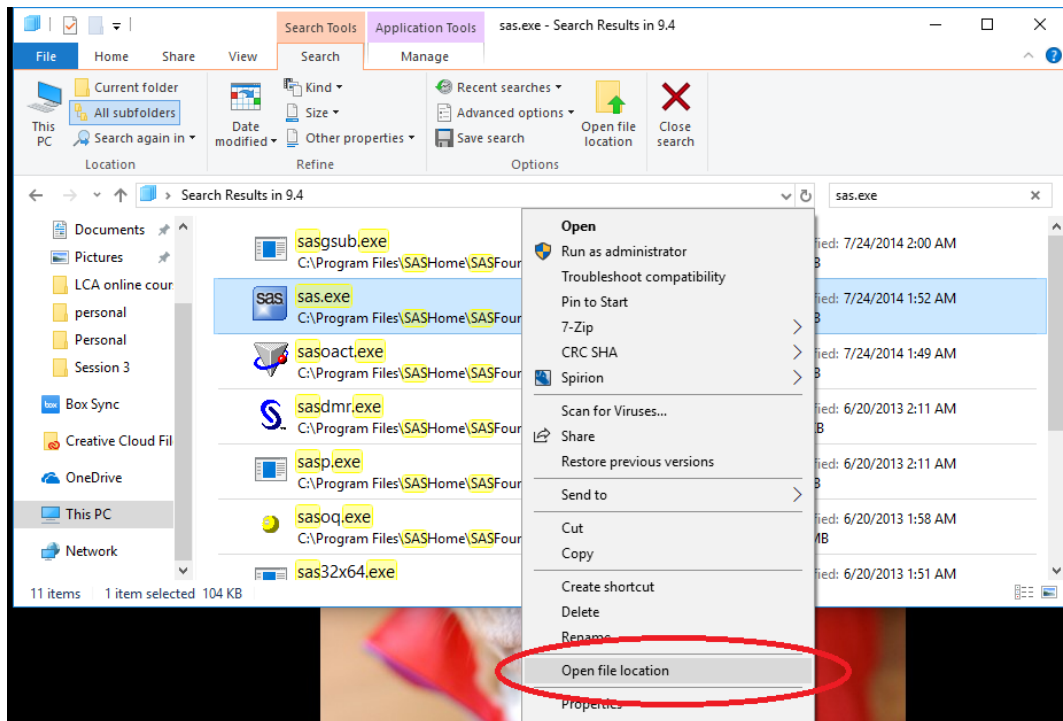


5. Locate and open the folder containing the SAS executable file.
  - a. Open a Windows Explorer folder.

b. Search for 'sas.exe.'

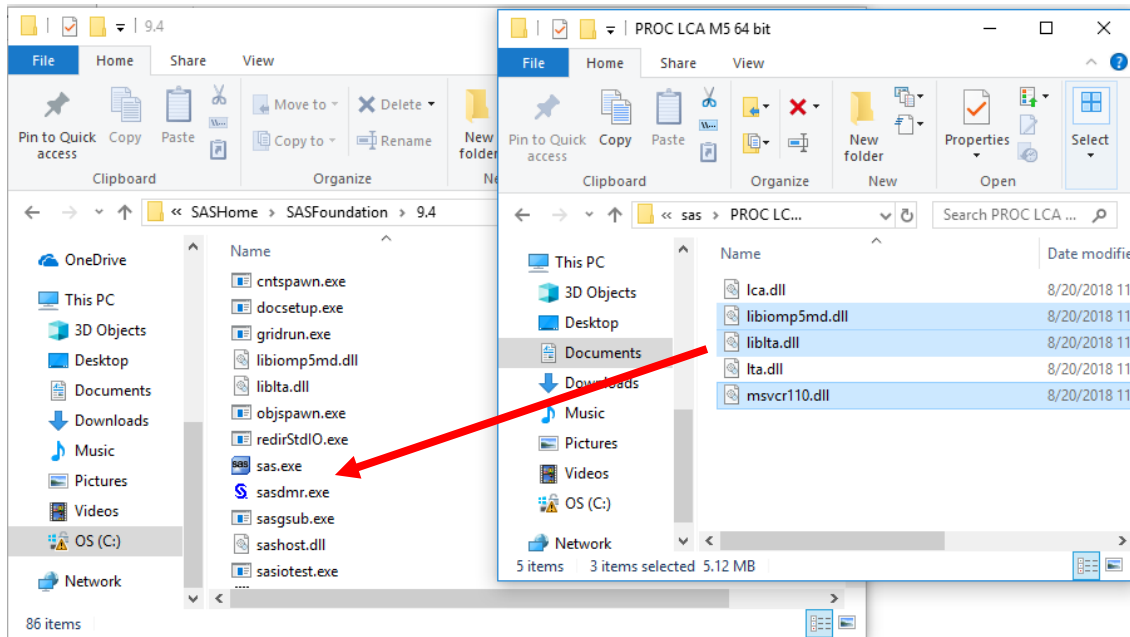


c. Right-click on the sas.exe file. In the menu that opens, click on "Open File Location."

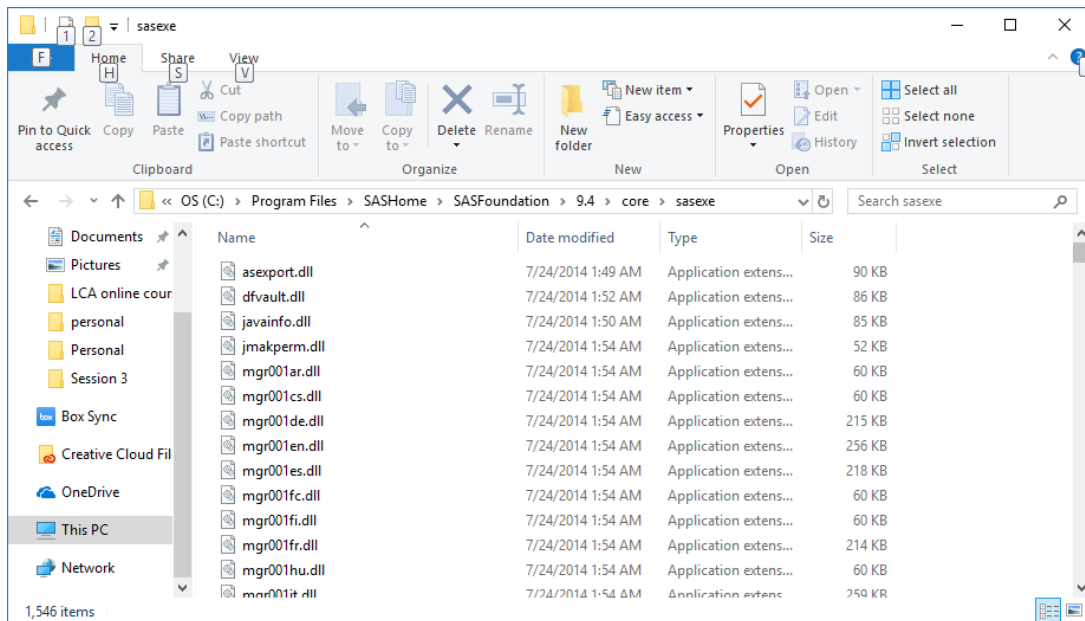


d. The proper folder location will open.

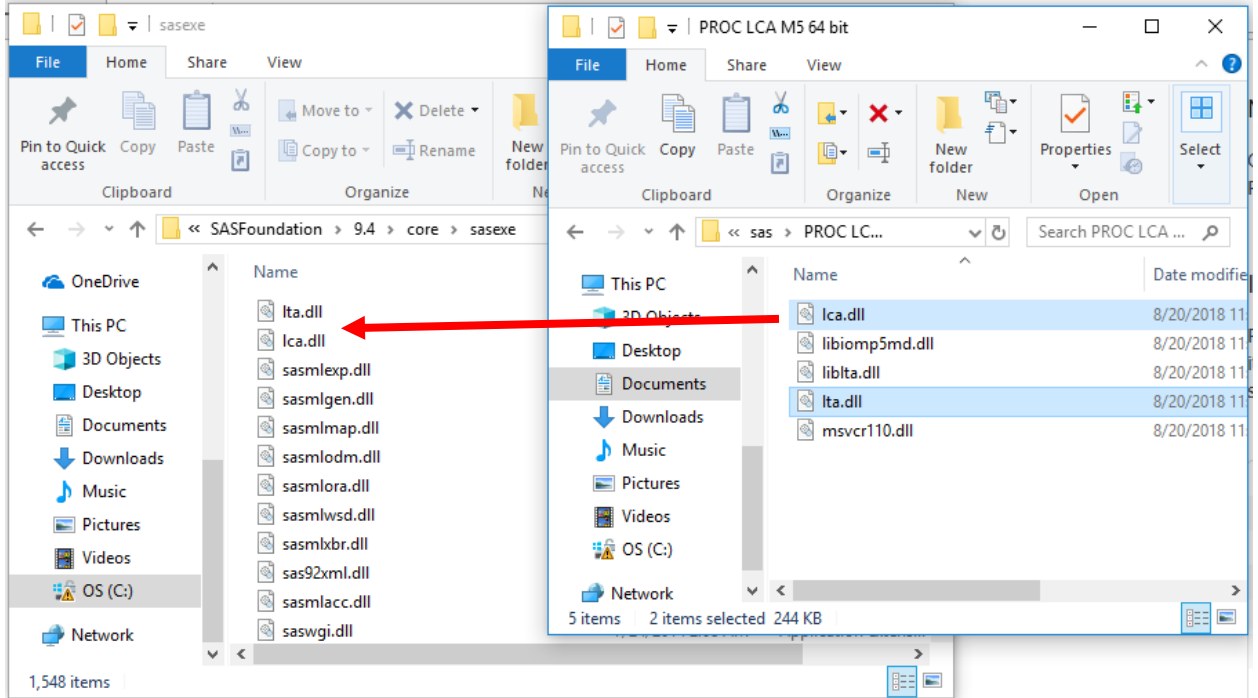
6. Move the files **liblta.dll**, **msvcr110.dll** and **libiomp5md.dll** from the download folder opened in step 3 to the folder opened in step 5.



7. In the same folder where you just placed the two .dlls, navigate to the “\core\sasexe” subdirectory.



8. Move the files **lca.dll** and **lta.dll** from the download folder opened in step 3 to the folder opened in step 7 (ending in /core/sasexe).



9. Installation is complete. Close folders and launch SAS.